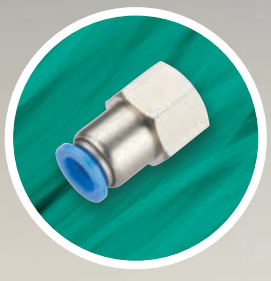


# Wade™

## Compact Push-In Fittings



OUR GENIUS IS FITTINGS

# Compact Push-In Fittings

## Technical Introduction

Enables quick and easy connection and disconnection between the tube and fitting. This provides the added benefit of easy maintenance.

### Mounting facility

Polybutylene bodies feature fixing holes, enabling secure mounting of the fitting and easy installation.

### Materials

- Nickel Plated brass stud thread connection
- Polybutylene body
- Stainless Steel Security Ring
- Nitrile 'O' Ring Seal.

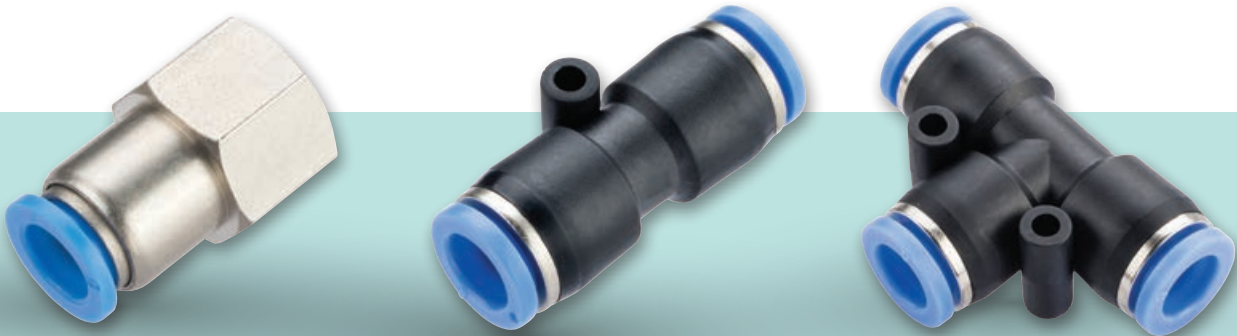
### Technical Characteristics

Maximum working pressure: 10 Bar  
Maximum working temperature: +60° C  
Suitable for use on pneumatic applications

### Products in the Compact Push-In Range

Compact Push-In Fittings

3



# Compact Push-In Fittings

## MALE STUD COUPLING -BSPT & M5

### FEATURES & BENEFITS

- In-line configuration with a BSP taper male stud thread. Options also available with M5 male stud thread
- Enables tube connection to mating BSP taper and M5 female threaded ports



Part No	OD	Thread
JPC4-M5	4	M5
JPC4-01	4	1/8
JPC4-02	4	1/4
JPC6-M5	6	M5
JPC6-01	6	1/8
JPC6-02	6	1/4
JPC8-01	8	1/8
JPC8-02	8	1/4
JPC8-03	8	3/8
JPC10-02	10	1/4
JPC10-03	10	3/8

## FEMALE STUD COUPLING -BSPP & M5

### FEATURES & BENEFITS

- In-line configuration with BSP Parallel female stud thread. Option also available with M5 female stud thread
- Enables tube connection to mating BSP parallel or M5 metric parallel male stud threads



Part No	OD	Thread
JPCF4-M5	4	M5
JPCF4-01	4	1/8
JPCF4-02	4	1/4
JPCF6-01	6	1/8
JPCF6-02	6	1/4
JPCF8-01	8	1/8

## ELBOW MALE STUD -BSPT & M5

### FEATURES & BENEFITS

- 90° Elbow configuration with BSP taper male stud thread. Options also available with M5 male stud thread
- Enables tube connection to mating BSP taper and M5 female threaded ports



Part No	OD	Thread
JPL4-M5	4	M5
JPL4-01	4	1/8
JPL4-02	4	1/4
JPL6-M5	6	M5
JPL6-01	6	1/8
JPL6-02	6	1/4
JPL6-03	6	3/8
JPL8-01	8	1/8
JPL8-02	8	1/4
JPL8-03	8	3/8

## FEMALE STUD -ELBOW BSPP

### FEATURES & BENEFITS

- 90° Elbow configuration with BSP parallel female stud thread
- Enables tube connection to mating BSP parallel male stud threads



Part No	OD	Thread
JPLF4-01	4	1/8
JPLF4-02	4	1/4
JPLF6-01	6	1/8
JPLF6-02	6	1/4
JPLF6-03	6	3/8
JPLF8-01	8	1/8
JPLF8-02	8	1/4

Every effort has been made to ensure that the information contained in this publication is accurate at the time of publishing. Wade assumes no responsibility or liability for typographical errors or omissions or for any misinterpretation of the information within the publication and reserves the right to change without notice.

# Compact Push-In Fittings

## FEMALE STUD COUPLING -BSPP & M5

### FEATURES & BENEFITS

- In-line configuration
- Enables connection of 2 tubes of the same outside diameter



Part No	OD
JPU4	4
JPU6	6
JPU8	8
JPU10	10
JPU12	12

## EQUAL ELBOW

### FEATURES & BENEFITS

- 90° Elbow configuration
- Enables connection of 2 tubes of the same outside diameter



Part No	OD
JPV4	4
JPV6	6
JPV8	8
JPV10	10
JPV12	12

## REDUCING COUPLINGS

### FEATURES & BENEFITS

- In-line configuration
- Enables connection of 2 tubes of different outside diameters



Part No	OD	X OD
JPG6>4	6	4
JPG8>6	8	6
JPG10>8	10	8
JPG12>10	12	10

## EQUAL TEE

### FEATURES & BENEFITS

- 'T' configuration
- Enables connection of 3 tubes of the same outside diameter



Part No	OD
JPE4	4
JPE6	6
JPE8	8
JPE10	10
JPE12	12

Every effort has been made to ensure that the information contained in this publication is accurate at the time of publishing. Wade assumes no responsibility or liability for typographical errors or omissions or for any misinterpretation of the information within the publication and reserves the right to change without notice.



To visit our Video Library go to:  
[www.youtube.com/user/CraneBSU](http://www.youtube.com/user/CraneBSU)



# Wade™

CRANE HOUSE, EPSILON TERRACE  
WEST ROAD, IPSWICH  
SUFFOLK, IP3 9FJ,  
UNITED KINGDOM  
TELEPHONE: +44 (0)1473 277460  
FAX: +44 (0)1473 277411  
EMAIL: [wadesales@cranebsu.com](mailto:wadesales@cranebsu.com)

[www.wadefittings.com](http://www.wadefittings.com)



FM311  
ISO 9001

- Designed and manufactured under quality management systems in accordance with BS EN ISO 9001-2008

Every effort has been made to ensure that the information contained in this publication is accurate at the time of publishing. Wade assumes no responsibility or liability for typographical errors or omissions or for any misinterpretation of the information within this publication and reserves the right to change without notice. We hope that our communications have an impact on you, but not on the environment. We have taken steps to ensure this leaflet is printed on FSC material and the paper is made by a totally chlorine free process.

W\_CPFFPD\_07\_2016